



**Master Thesis: The senescence-associated
secretory phenotype in pulmonary fibrosis**
Research Group of Prof. Dr. Lehmann at CPC Munich

**HELMHOLTZ
MUNICH**

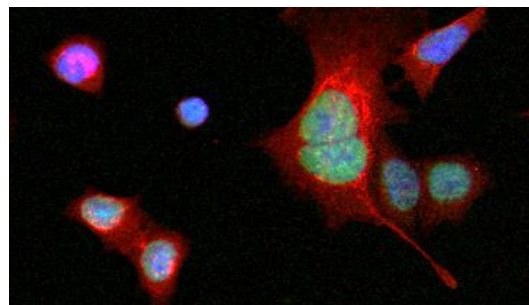
Start Date: Mid-September/October 2024

Why Choose Us?

- **Cutting-Edge Research:** Engage in pioneering studies on the mechanisms of lung aging and chronic lung diseases.
- **Innovative Models:** Utilize 3D models of lung aging to study the role of cellular senescence in pulmonary fibrosis.
- **Expert Supervision:** Work under the mentorship of Prof. Dr. Lehmann, a distinguished leader in pulmonary research.
- **Collaborative Environment:** Collaborate with a team of dedicated researchers and access state-of-the-art facilities.
- **Career Advancement:** Gain valuable experience and enhance your career prospects in the field of respiratory medicine and biomedical research.

Your Role:

- Conduct experimental research on lung aging processes and the pathophysiology of chronic lung diseases.
- Utilize advanced techniques in molecular biology, histology, and immunoassays.
- Employ 3D models to investigate the impact of cellular senescence on pulmonary fibrosis.
- Analyze data, interpret results, and contribute to scientific publications.
- Participate in regular team meetings and present your findings.



Requirements:

- Bachelor's degree in biology, medicine, biochemistry, or a related field.
- Strong interest in pulmonary research and aging.
- Basic laboratory skills and experience with molecular biology techniques.
- Basic knowledge of statistics.
- Excellent communication and teamwork abilities.
- Motivated, independent, and eager to learn.

Application Process:

- To apply, please send the following documents to mareike.lehmann@helmholtz-munich.de
- Cover letter detailing your motivation and research interests.
 - Curriculum Vitae (CV).
 - Academic transcripts.

Application Deadline: 15.07.2024

Contact Information:

Prof. Dr. Lehmann
Comprehensive Pneumology Center (CPC)
Munich
Website: <https://www.helmholtz-munich.de/en/lhi/research-groups/lehmann-lab>
Email: mareike.lehmann@helmholtz-munich.de

Seize this opportunity to contribute to transformative research in lung health. Join us at CPC Munich and make a lasting impact on the future of respiratory medicine.